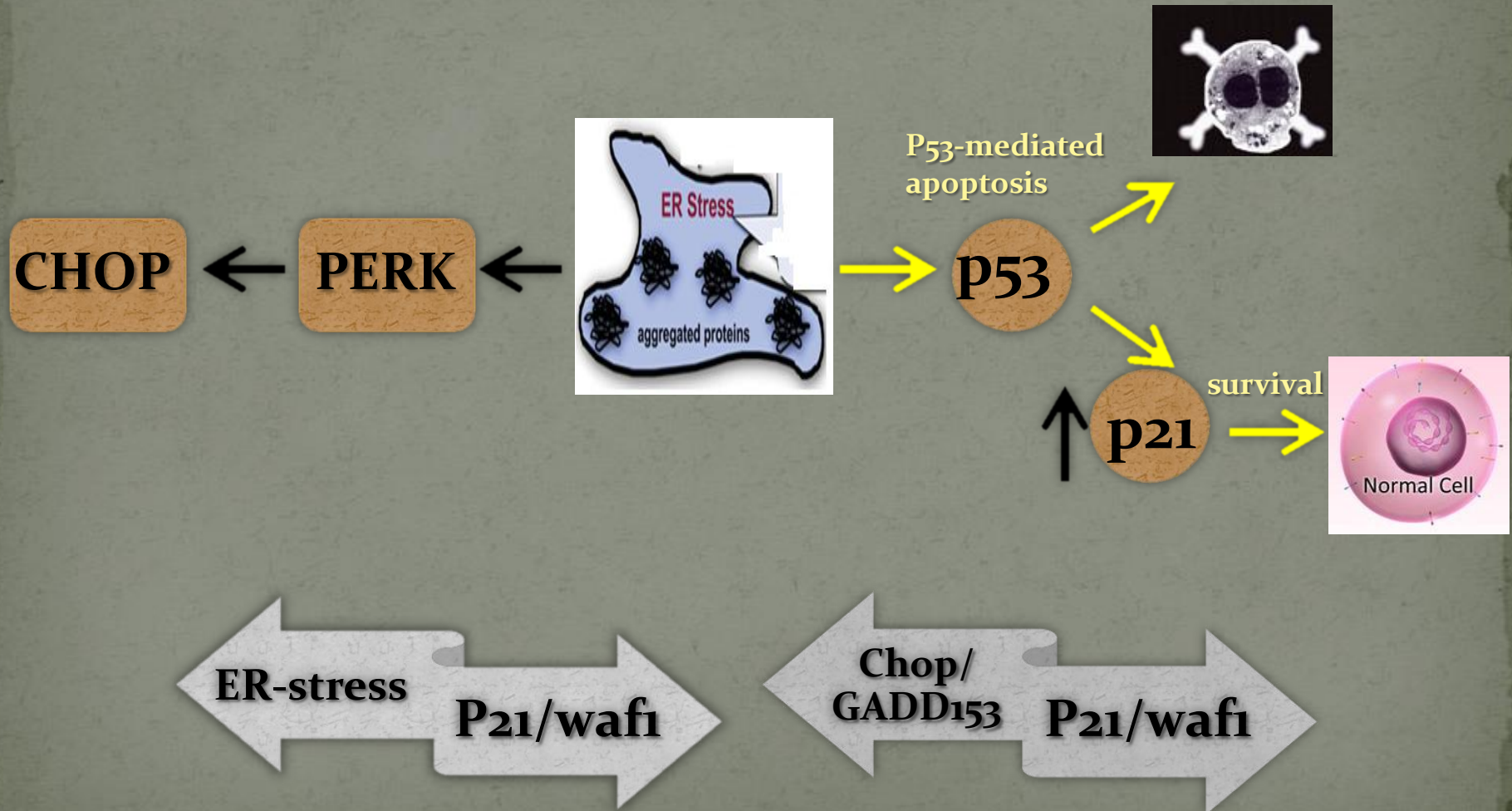


# CHOP-dependent regulation of p21/waf1 underlines the transition from the pro-survival to the pro-apoptotic activity of ER stress response

Chrysovalantou Mihailidou, Athanasios G. Papavassiliou and Hippokratis Kiaris  
Department of Biological Chemistry, Medical School, University of Athens, Greece



# CHOP suppresses p21 expression

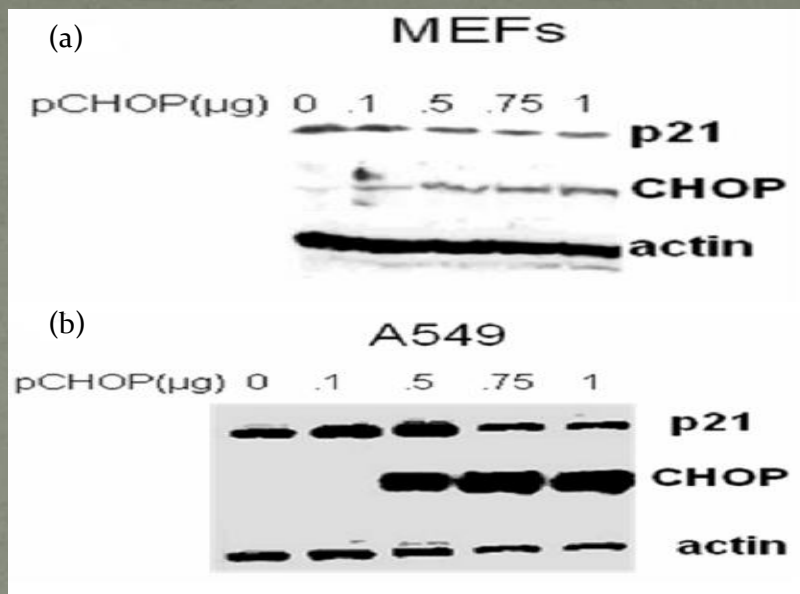
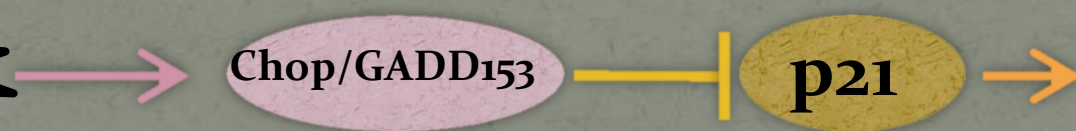


Fig. 1. Immunoblot analysis for CHOP and p21 in MEFs (a) and A549 (b).



This research has been co-financed by the European Union (European Social Fund – ESF) and Greek national funds through the Operational Program "Education and Lifelong Learning" of the National Strategic Reference Framework (NSRF) - Research Funding Program: Heracleitus II. Investing in knowledge society through the European Social Fund.